





BAG UNLOADING STATION

BigBag

individual PROJECTS

Unloading is a necessary action in many manufacturing enterprises (*raw materials delivered in large quantities bags, e.g. BIG-BAG*).

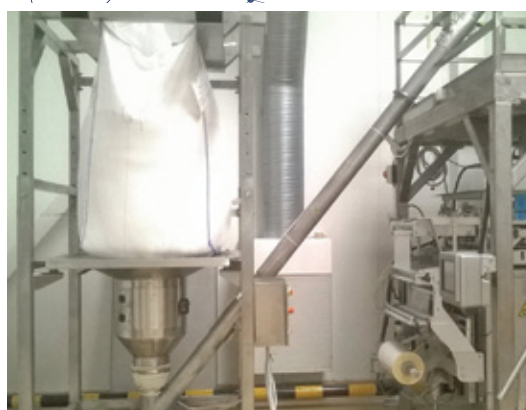
It is a process that takes a lot of time and involves many employees.

MECH-MASZ has found a solution that significantly facilitates and speeds up the work by providing its customers with complete solutions in the form of automatic unloading stations such as BigBags.



TWO POSSIBLE SOLUTIONS OF BAG FIXING

- Through a forklift truck, which lifts the bag with a special connector and fixes it at the station
- Through an automatic crane, which is part of the entire unloading station, controlled by a remote control connected by a long cable





BAG UNLOADING STATION

BigBag

The attached bag is connected with a feeding hopper that directs the product to the transporter. In the next part, the product is transported further to other machines, e.g. weighing machines.

The speed of the conveyor is smoothly regulated by means of an inverter, depending on the efficiency of the system that the customer wants to achieve.

With solutions provided, bags with many raw materials (*such as flour, bread crumbs, baking additives and others*) can be unloaded.

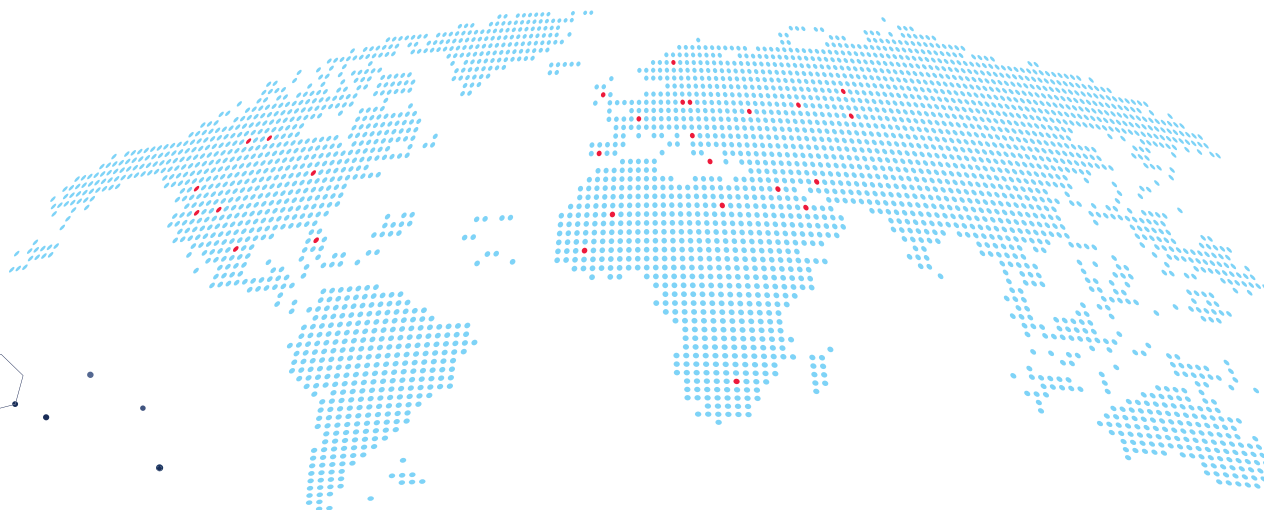
The construction is made of stainless steel, fixed permanently to the ground. The construction can be assembled, prepared for transportation and mounted at the customer's place.

Each station design is a bit varied and matched individually to customer requirements. The customer each time receives a project of a station according to his own needs.



Mech
Masz
Szczeciński

Lider w branży



MECH-MASZ Szczeciński sp. j.

 *Jaroszewo 80, 88-400 Żnin, POLAND*

 *+48 52 30 31 238, +48 52 30 31 239*

 *mechmasz@mech-masz.com.pl*



www.mech-masz.com.pl
www.mech-masz.eu